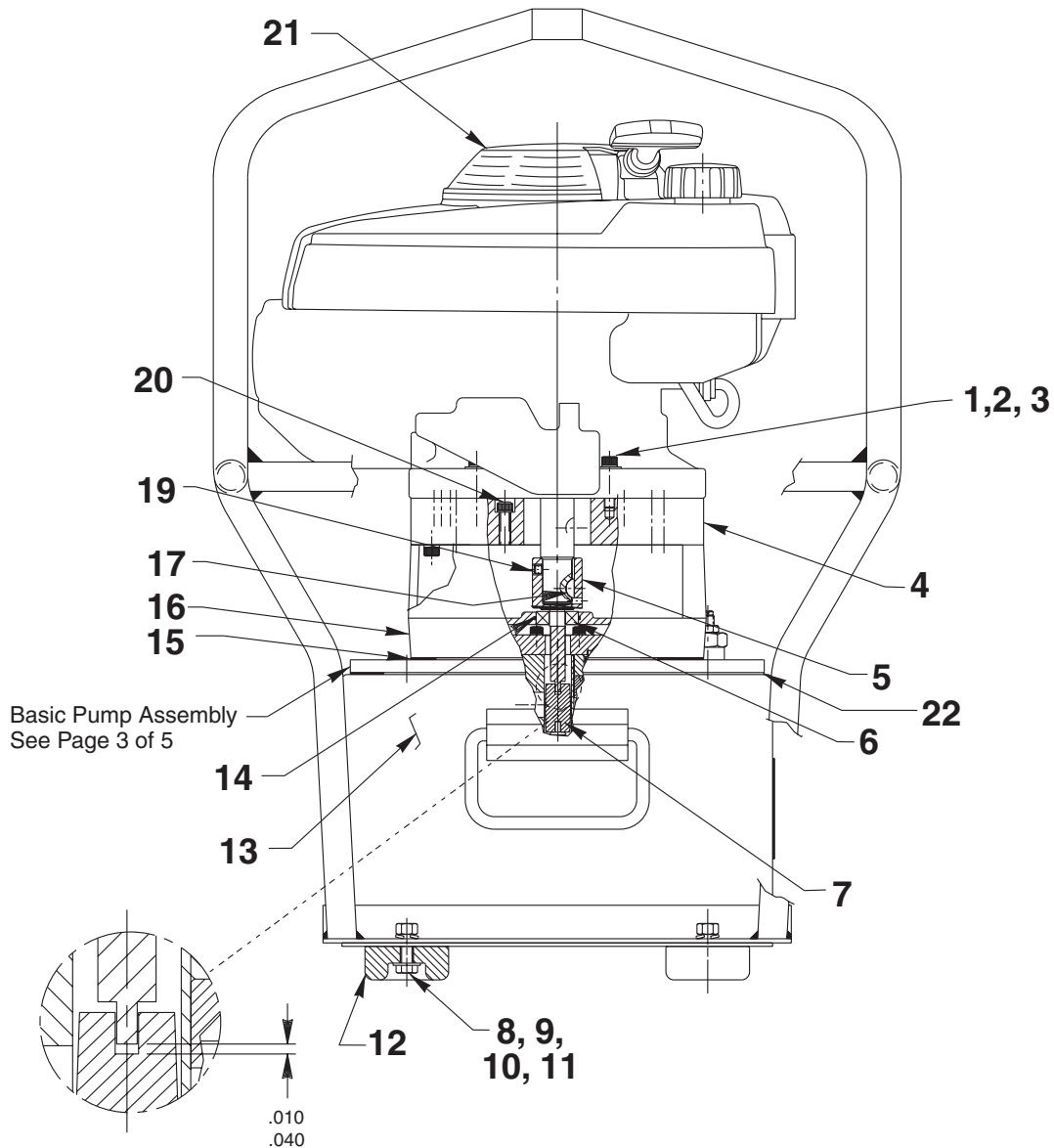


GAS HYDRAULIC PUMP

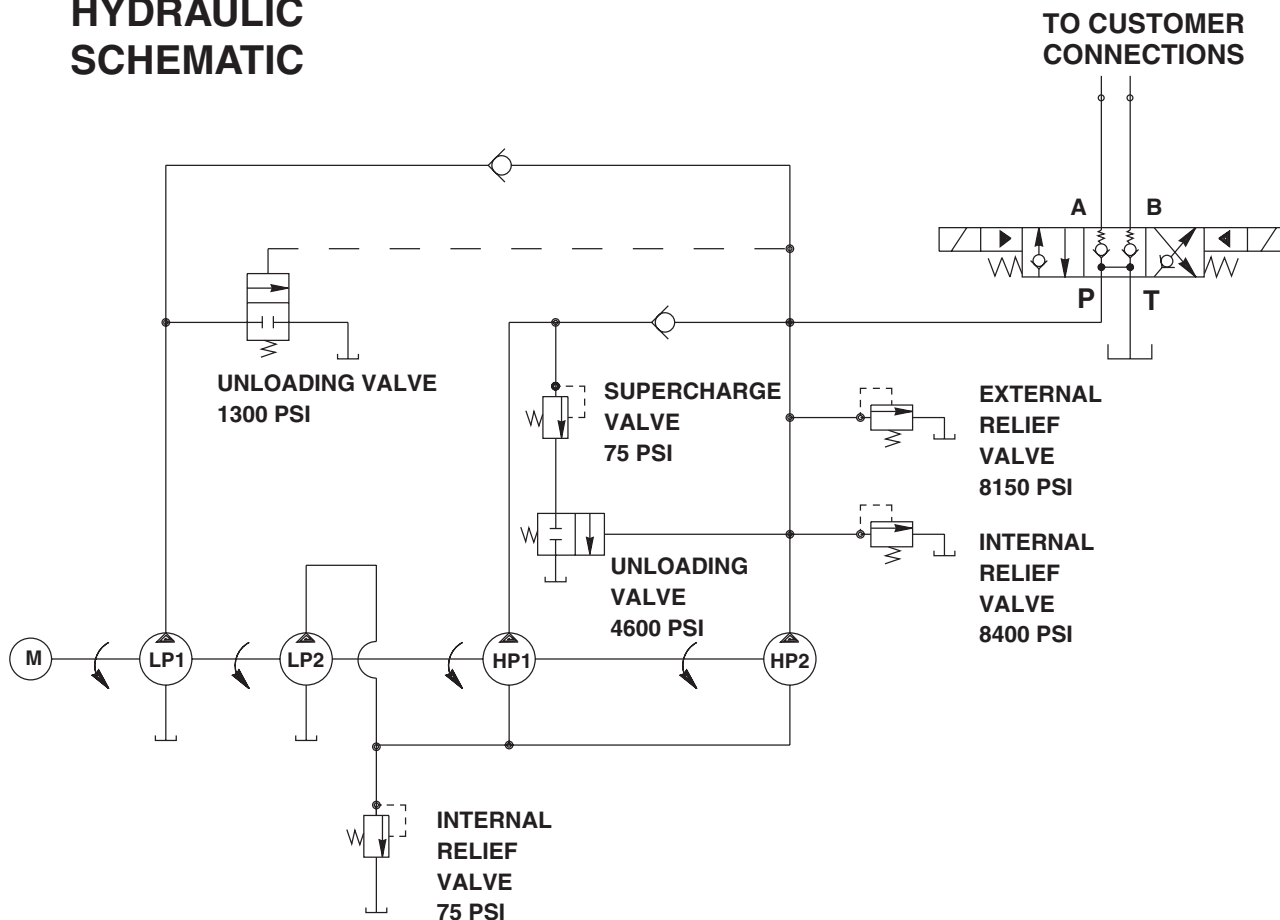
Max. Capacity: 10,000 PSI



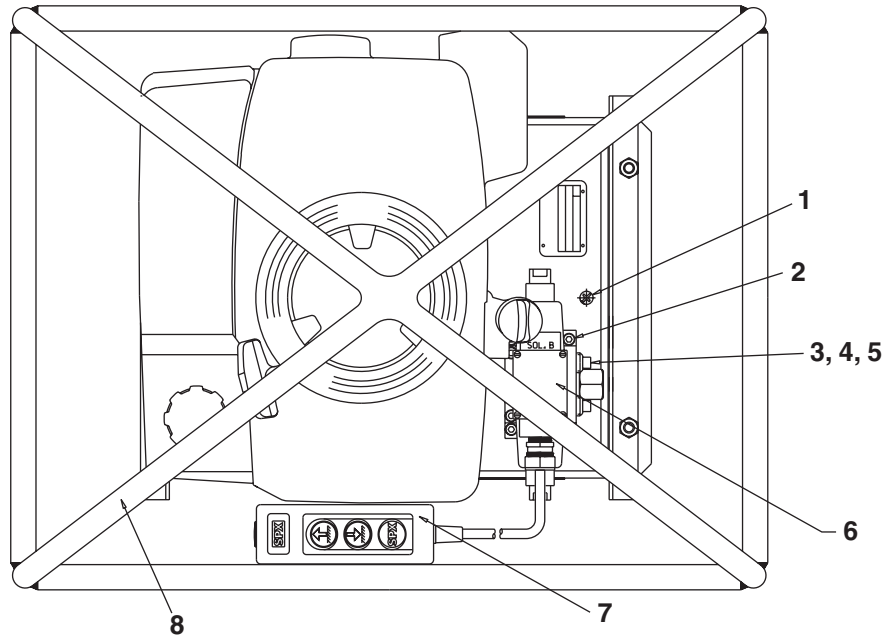
(DISTANCE BETWEEN BOTTOM OF
420052 SHAFT ADAPTER AND
BOTTOM OF SLOT IN 251206.)

Item No.	Part No.	No. Req'd	Description
1	10246	3	Washer, Lock (.59 x .32)
2	10948	3	Screw (5/16-18 UNC X 1-1/2 Lg.)
3	10257	3	Washer, Plain (.69 x .35)
4	420200	1	Mounting Plate
5	420052	1	Shaft Extension
6	10439	1	Ball Bearing
7	251206	1	Coupling
8	10052	4	Cap Screw (3/8-16 UNC X 1-1/4 Lg.)
9	10258	4	Washer (For 3/8 bolt)
10	10247	4	Lockwasher (For 3/8 bolt)
11	10204	4	Hex Nut (3/8-16 UNC)
12	250354	4	Rubber Bumper
13	40137OR9	1	Reservoir
14	15124	1	O-ring (1-3/8 X 1-1/4 X 1/16)
15	40987	1	Gasket
16	50384WH2	1	Mounting Engine Plate
17	10945	1	Woodruff Key
19	10556	1	Set Screw (1/4-20 UNC X 1/4 Lg.)
20	250427	4	Screw (5/16-18 UNC x 1/2 Lg.)
21	420416	1	Gas Engine (5.5 HP)
22	58506	1	Gasket

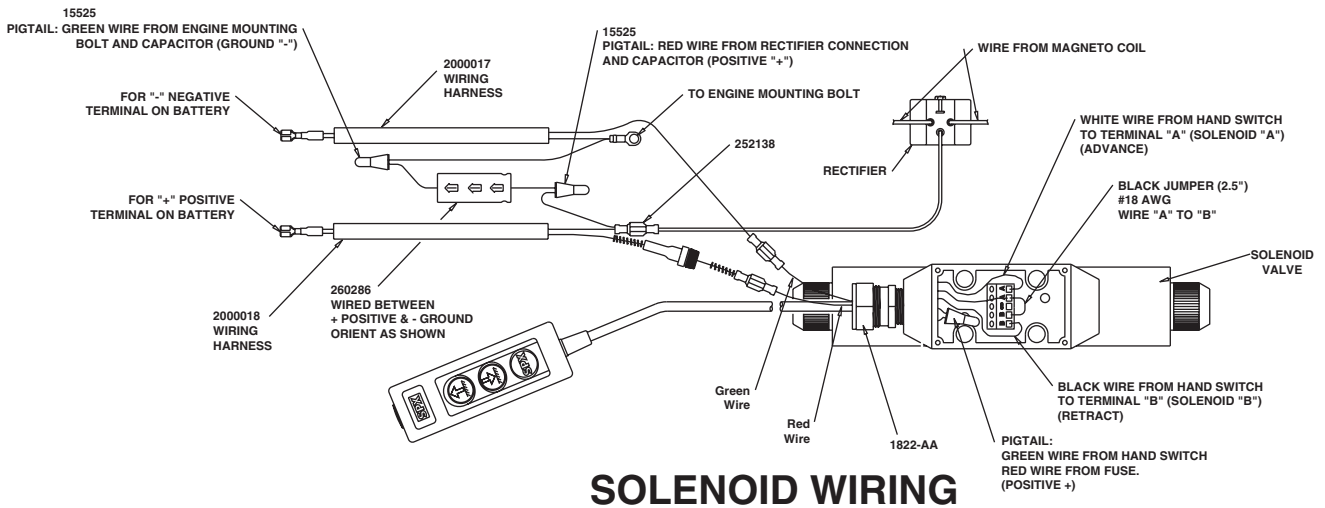
HYDRAULIC SCHEMATIC



TOP VIEW

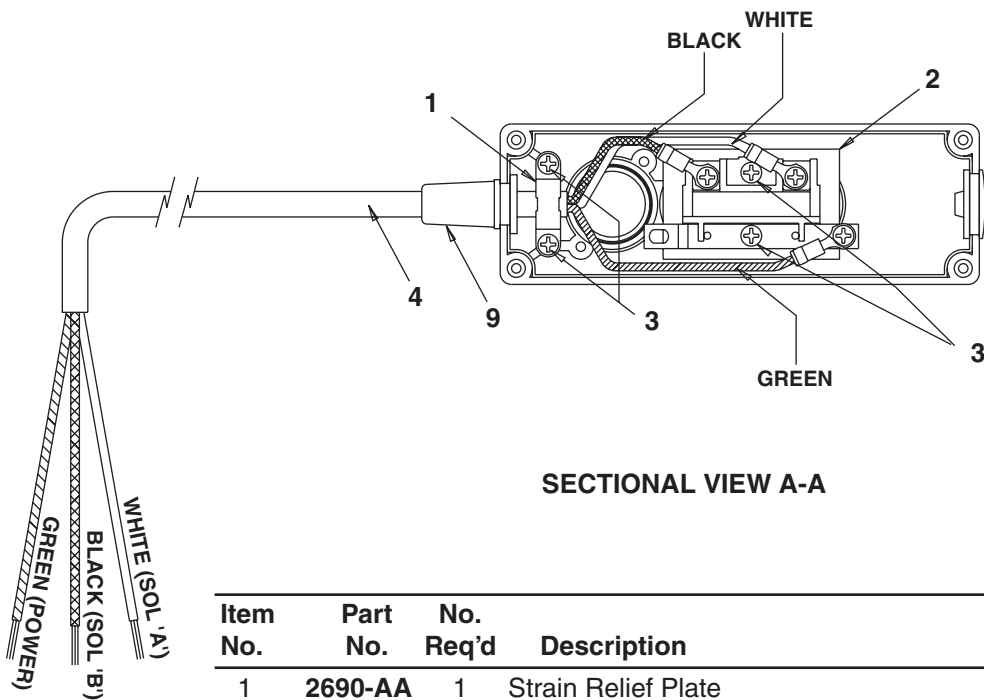
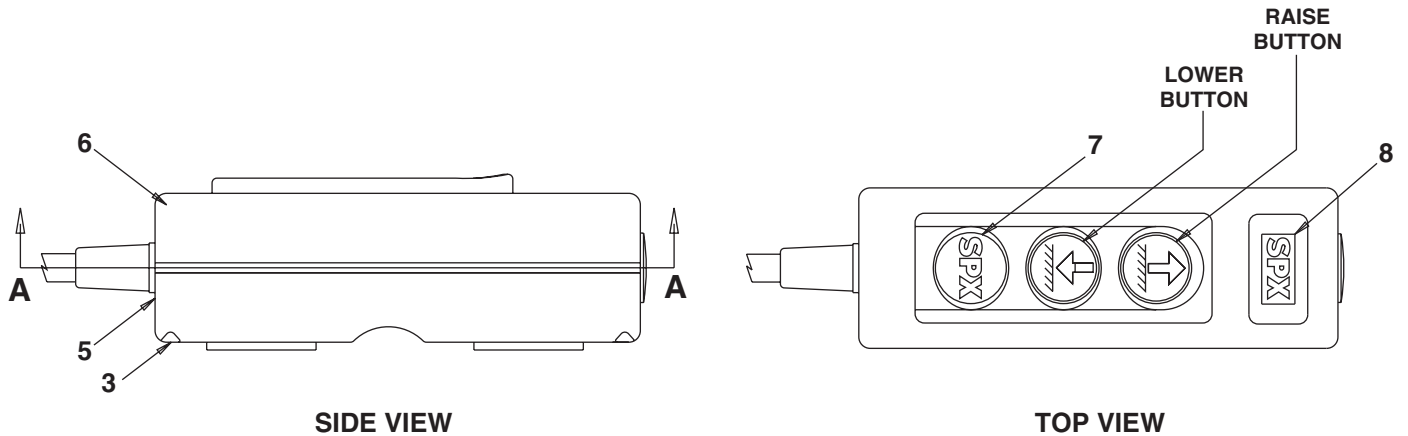


Item No.	Part No.	No. Req'd	Description
1	10177	10	Screw, Round Hd (3/8-16 x 1-1/4)
2	10856	4	Screw, Soc Hd (1/4-20 x 2-1/2)
3	200395	1	Gasket
4	65008V	1	Valve, Solenoid (4-way; Viton Seals)
5	200609	1	Tube, Drain
6	2000014	1	Valve Do3 (10 Volt 4-Way, 3 position Open Center)
7	5375-AC	1	Electric switchbox (PUGD 18 / 3 25 ft.)
8	64121BK2	1	Frame Weldment



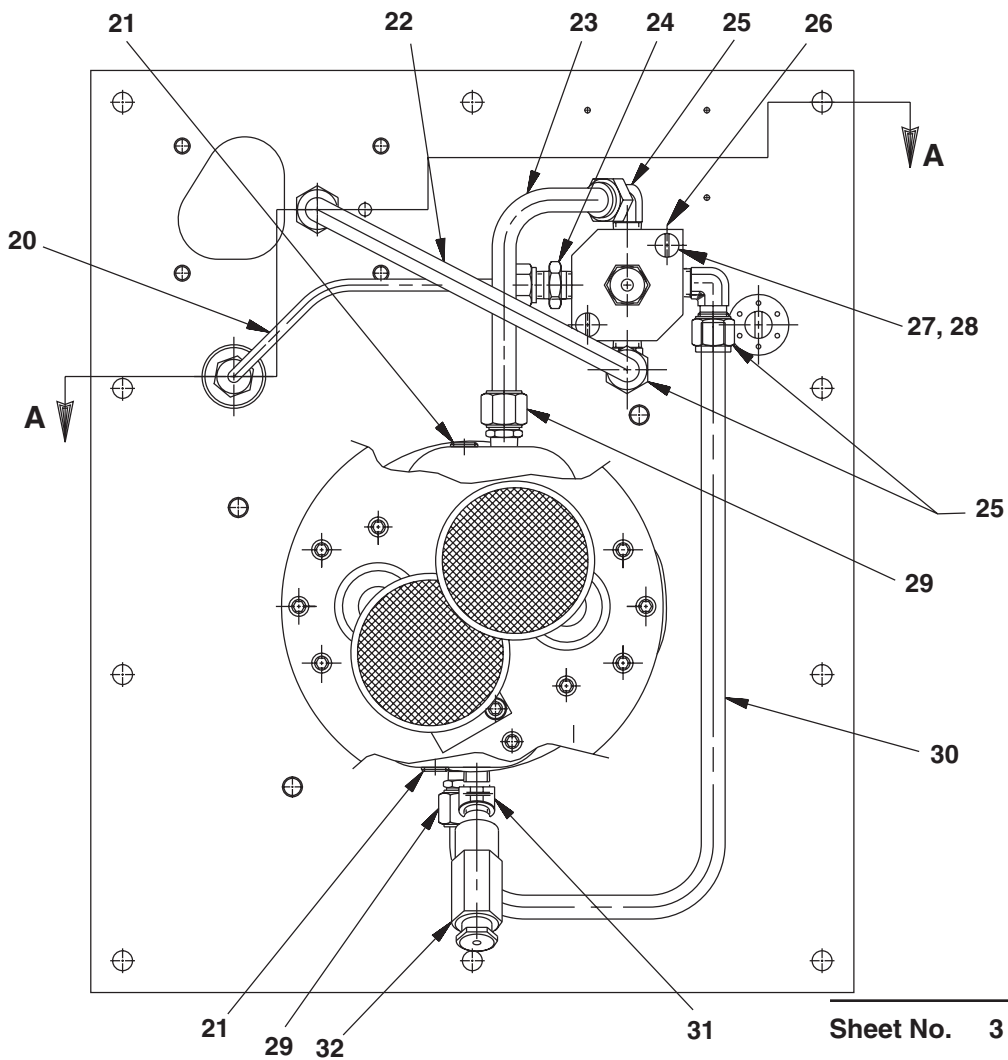
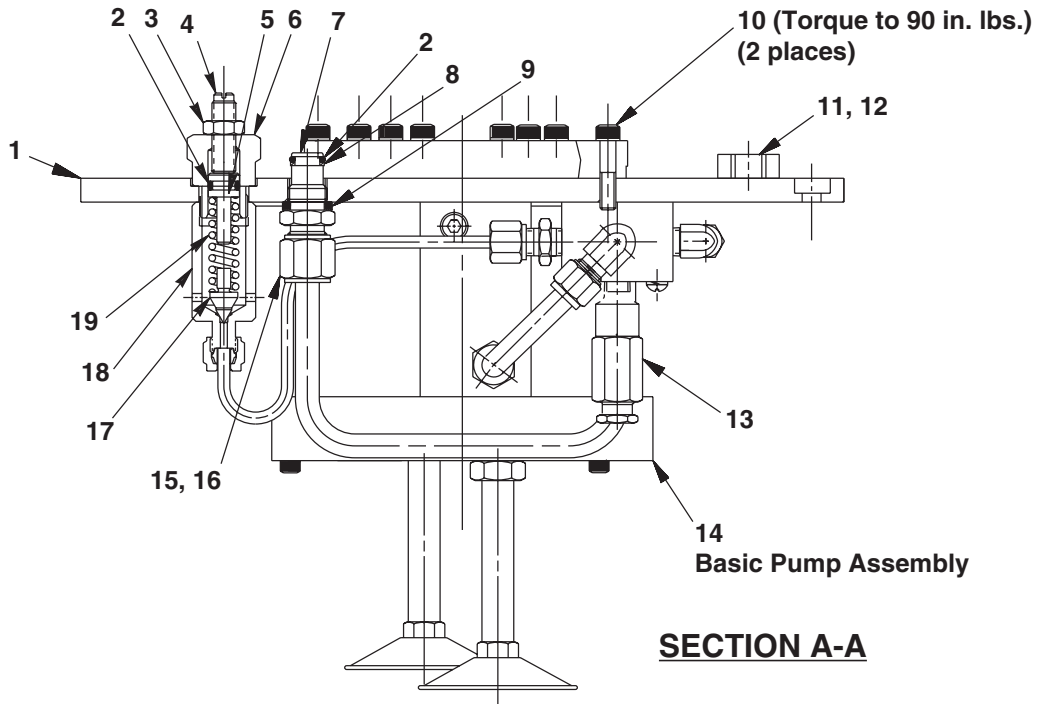
SOLENOID WIRING

#5375-AC HAND CONTROL ASSEMBLY



Item No.	Part No.	No. Req'd	Description
1	2690-AA	1	Strain Relief Plate
2	2689-AA	1	Switch Kit
3	2734-AA	8	Screw (KA35 x 16mm Phil Pan)
4	5376-AB	1	Electrical Cord (SJO 18/3 25 ft with Gasket)
5	2680-BC	1	Box Bottom
6	2679-CC	1	Box Top Cover
7	5163-AA	1	Decal (SPX round)
8	5146-AA	1	Decal (SPX square)
9	2681-BB	1	Gasket (Ref. This item is included with item 4)

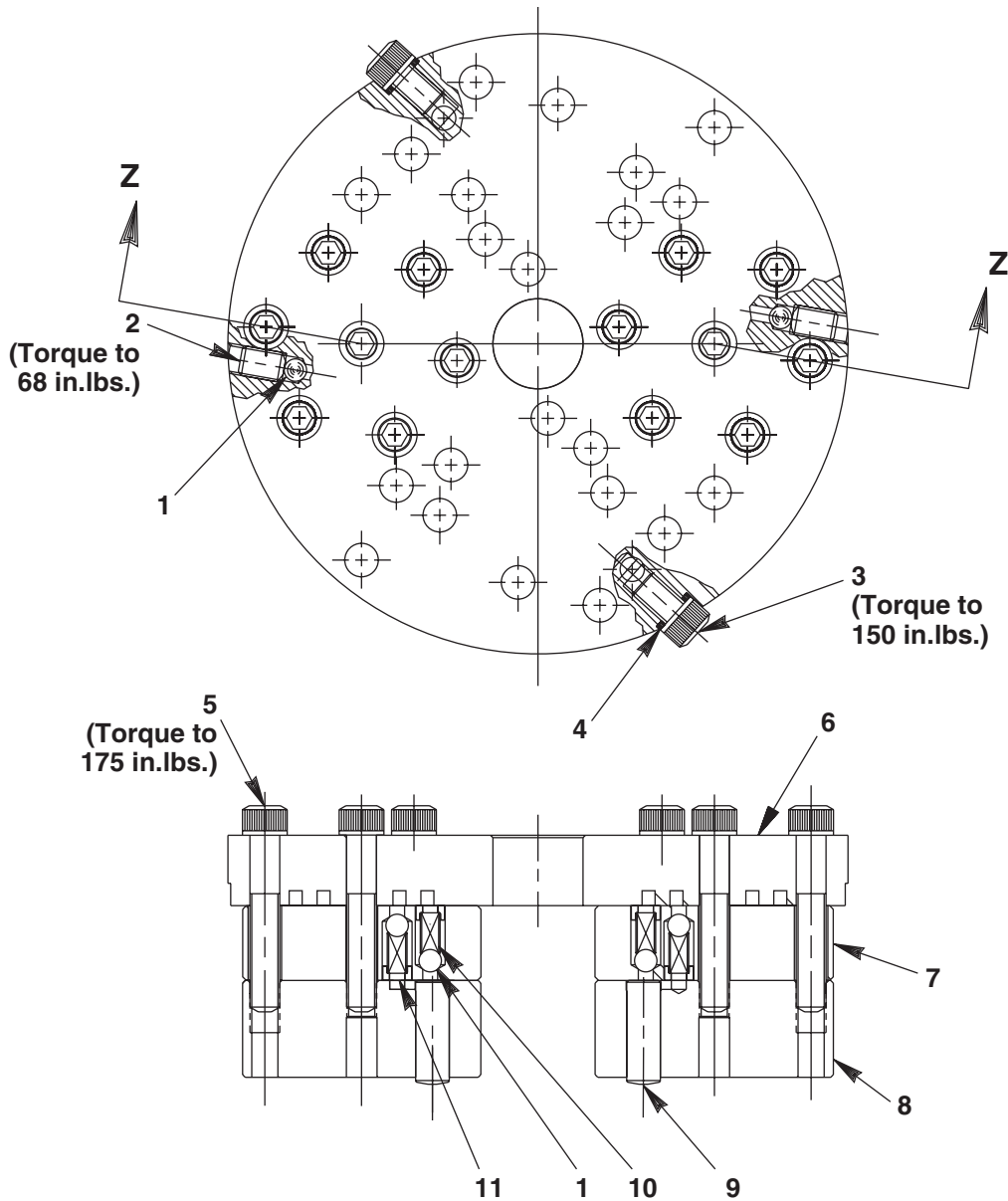
COVER PLATE ASSEMBLY - VITON SEALS



Parts List, Form No. 1000165, Back sheet 3 of 5

Item No.	Part No.	No. Req'd	Description
1	66278WH2	1	Plate, Cover
2	11439	2	O-ring (-12) Viton 75D .50 x .37
3	10386	1	Nut, Hex Jam (3/8-24)
4	22362	1	Screw, Adjust (3/8 -24 x 1-1/4)
5	21306	1	Guide, Spring
6	21305	1	Cap, Valve
7	20787	1	Connector, Valve
8	11863	1	Washer, Backup (.50 x .38)
9	21484	1	Spacer
10	10016	2	Screw, Socket Hd (1/4-20 x 1)
11	20937	1	Cap, Vent
12	18999	1	O-ring(-114) Viton .81 x .62
13	21278-80	1	Valve, Relief (8,000 psi)
14	59419	1	Pump, Basic
15	10430	1	Sleeve, Tube (3/8 Dia.)
16	10431	1	Fitting, Nut Tube (3/8 Tube)
17	21046	1	Stem, Valve
18	22361	1	Body, Valve
19	10495	1	Spring (.46 OD x 1.67 x .11 WS)
20	352077	1	Tube, Pressure Regulator
21	10427	2	Fitting, Plug (1/8 NPTF)
22	253683	1	Tube, Oil Line
23	253684	1	Tube, Oil Line
24	14844	1	Fitting, Straight (1/8 NPTF)
25	10665	3	Fitting, Elbow (90 Degree 1/4 NPTF)
26	351007	1	Manifold
27	12515	2	Screw, Round Hd (10-24 x 1-3/4)
28	10241	2	Washer Lock (.33 x .20)
29	12696	2	Fitting, Straight (1/8 NPTF)
30	352076	1	Tube, Oil Line
31	19121	1	Fitting, Elbow (45 Degree 1/8 NPTF)
32	48011-75	1	Valve, Relief (75 psi)

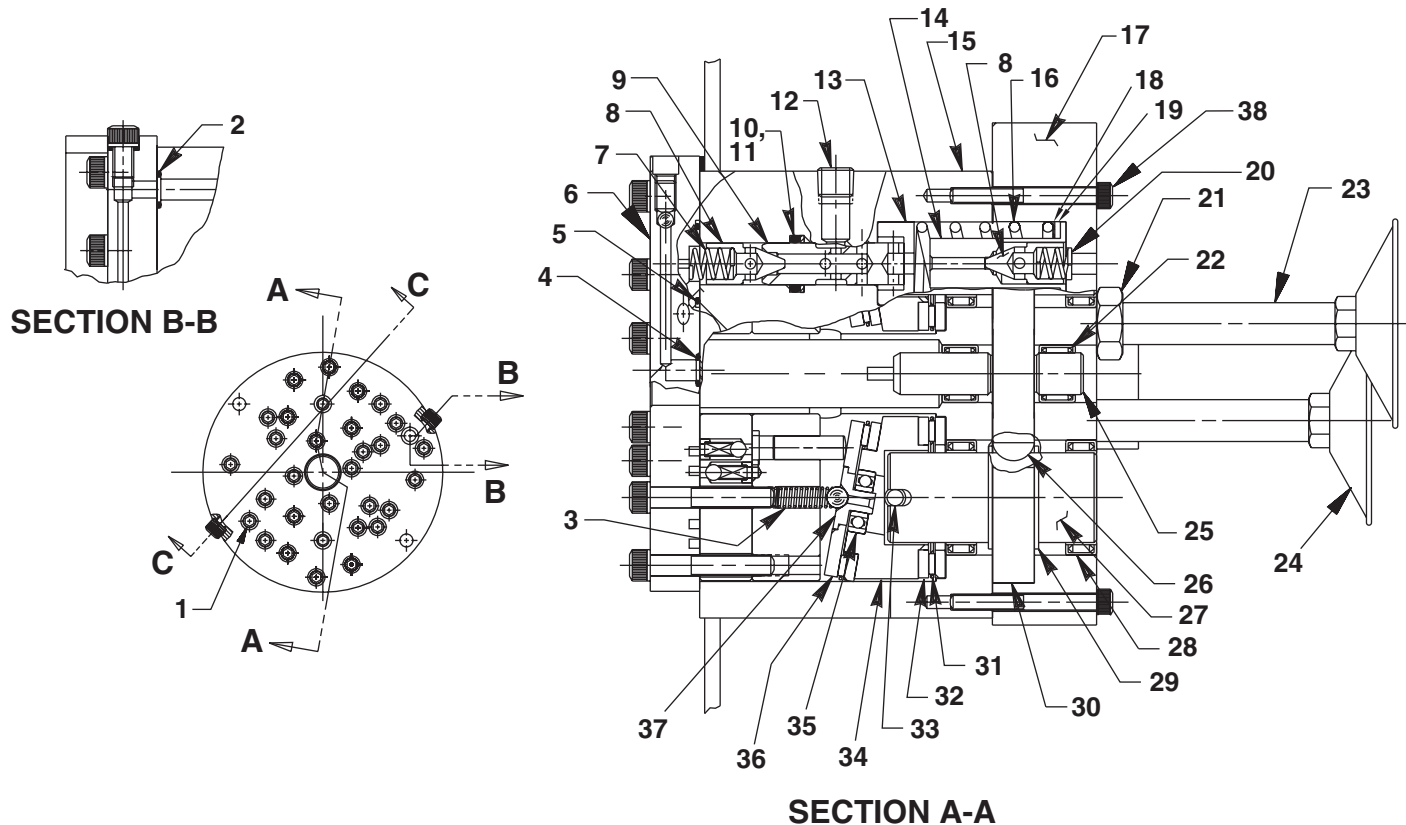
PUMP BARREL ASSEMBLY



SECTION Z-Z

Item No.	Part No.	No. Req'd	Description	Item No.	Part No.	No. Req'd	Description
1	12223	26	Ball, (3/16 Dia. Steel)	7	41048	2	Head, Valve (6 Piston)
2	10519	2	Screw, Set (1/4-20 x .375 knurled cup)	8	41063	2	Barrel, Pump
3	10002	2	Screw, Soc Hd (1/4-20 x 3/8)	9	21628	12	Piston
4	10442	2	Washer, Copper (.37 x .25)	10	10445	24	Spring (.16 OD x .72 x .01 WS)
5	10023	14	Screw, Soc Hd (1/4-28 x 1-1/2)	11	24549	24	Guide, Ball
6	66277	1	Plate, Top				

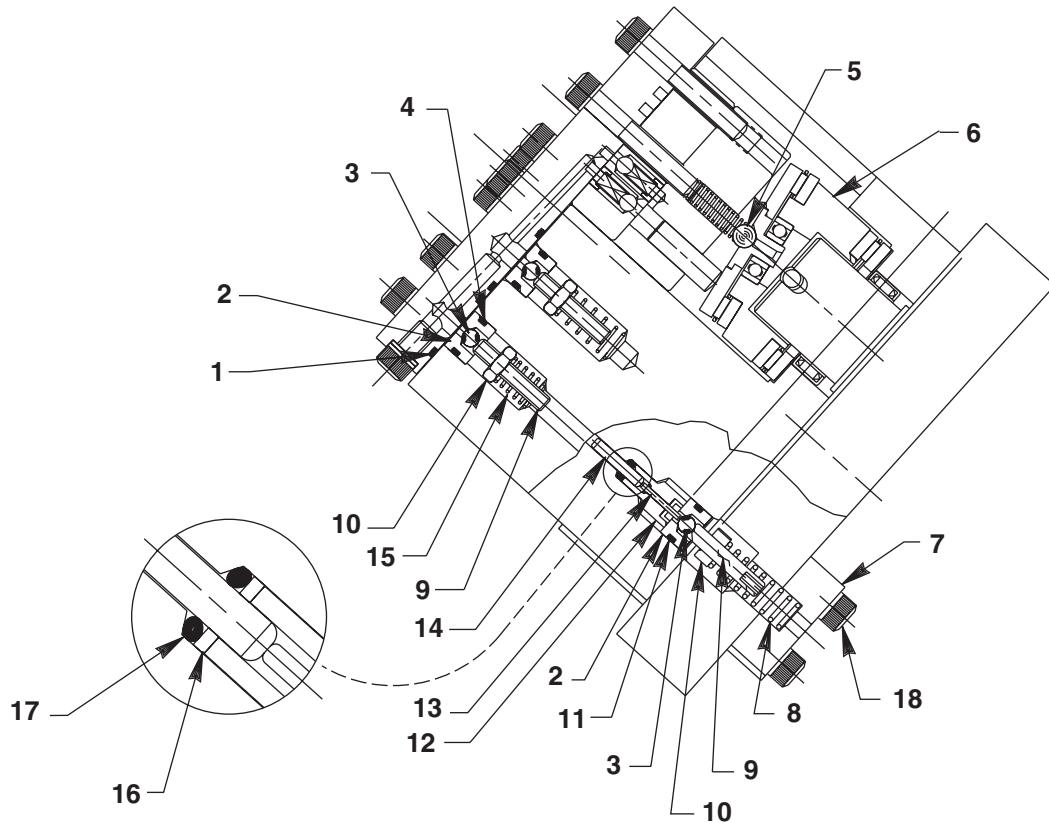
BASIC PUMP ASSEMBLY DUAL 9/32 DIAMETER PISTONS VITON SEALS



Item No.	Part No.	No. Req'd	Description
1	10020	20	Screw, Soc Hd (1/4-20 x 1-1/4)
2	18974	1	O-Ring (-011) Viton .43 x .31
3	10361	2	Spring (.25 OD x 1.00 x .03 WS)
4	11438	2	O-Ring (-010) Viton .37 x .25
5	11443	2	O-Ring (-018) Viton .87 x .75
6	DR352078		Pump Barrel Assembly (See sht 4 of 5)
7	10425	1	Spring (.37 OD x .75 x .03 WS)
8	20771	2	Poppet
9	20849	1	Spool
10	11445	1	O-Ring (-112) Viton .68 x .50
11	12389	1	Washer, Backup (.69 x .50)
12	10427	2	Fitting, Plug (1/8 NPTF)
13	23255	1	Guide, Spring
14	253299	1	Spacer
15	64560	1	Body, Double Pump
16	250633	1	Spring (1.0 OD x 1.99 x .21 WS)
17	66295	1	Plate, Pump End
18	200423	1	Shim
19	200645	1	Shim

Item No.	Part No.	No. Req'd	Description
20	250228	1	Spring (.36 OD x 1.00 x .03 WS)
21	10390	1	Nut, Hex Jam (1/2-30)
22	11199	2	Bearing, Needle
23	250851	2	Tube, Intake
24	29682	2	Filter, (Flat 100 x 90 Mesh)
25	21272	1	Gear, Drive
26	11821	2	Key, Woodruff
27	23556	2	Shaft
28	11064	4	Bearing, Needle
29	11261	4	Ring, Retain Ext (1.05 x .050)
30	23557	2	Gear, Drive
31	11228	4	Bearing, Needle
32	11227	6	Race, Bearing
33	11955	2	Pin, Spring Slotted (.25 x 1.75)
34	351004	1	Plate, Angle
35	11814	2	Bearing, Ball
36	23548	2	Plate, Top
37	23547	2	Plate, Bearing Top
38	10001	16	Screw

BASIC PUMP ASSEMBLY (CONTINUED)
DUAL 9/32 DIAMETER PISTONS
VITON SEALS

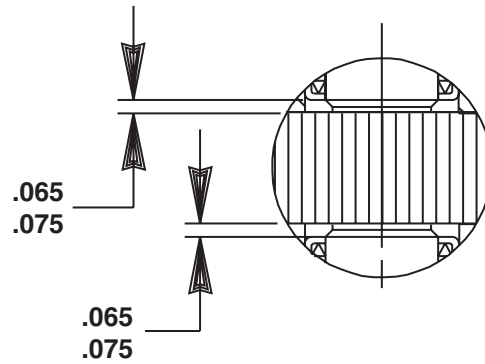


SECTION C-C

Item No.	Part No.	No. Req'd	Description
1	11443	1	O-Ring (-018) Viton .87 x .75
2	251065	3	Seat, Replaceable
3	12223	3	Ball (3/16" Diameter Steel)
4	19775	2	O-Ring (-012) Viton .50 x .37
5	10375	2	Ball (1/4" Diameter Steel)
6	351003	1	Plate, Angle
7	253694	1	Block, Retaining
8	16724	1	Spring (.36 OD x 1.20 x .08 WS)
9	251067	3	Set Screw (10-24 x 1.0 Plain Cup Pt.)

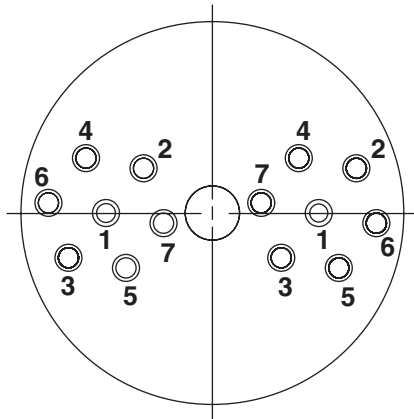
Item No.	Part No.	No. Req'd	Description
10	207405	3	Nut, Hex Lock (10-24)
11	11439	1	O-Ring (-012) Viton .50 x .37
12	251068	1	Guide
13	251666	1	Pin, Dowel (.06 x .56)
14	12149	1	Pin, Dowel (.13 x .75)
15	10425	2	Spring (.37 OD x .75 x .03 WS)
16	214992	1	Washer, Backup (.24 x .13)
17	206445	1	O-Ring (-006) Viton .25 x .12
18	15122	2	Screw

NEEDLE BEARING INSTALLATION SPECIFICATIONS



When replacing the needle bearings on the drive gear of the basic pump, the dimensions shown must be as specified.

BOLT TIGHTENING SEQUENCE



NOTE: Assemble in sequence shown. Lubricate under head and on threads. Torque to 180 in. lbs.