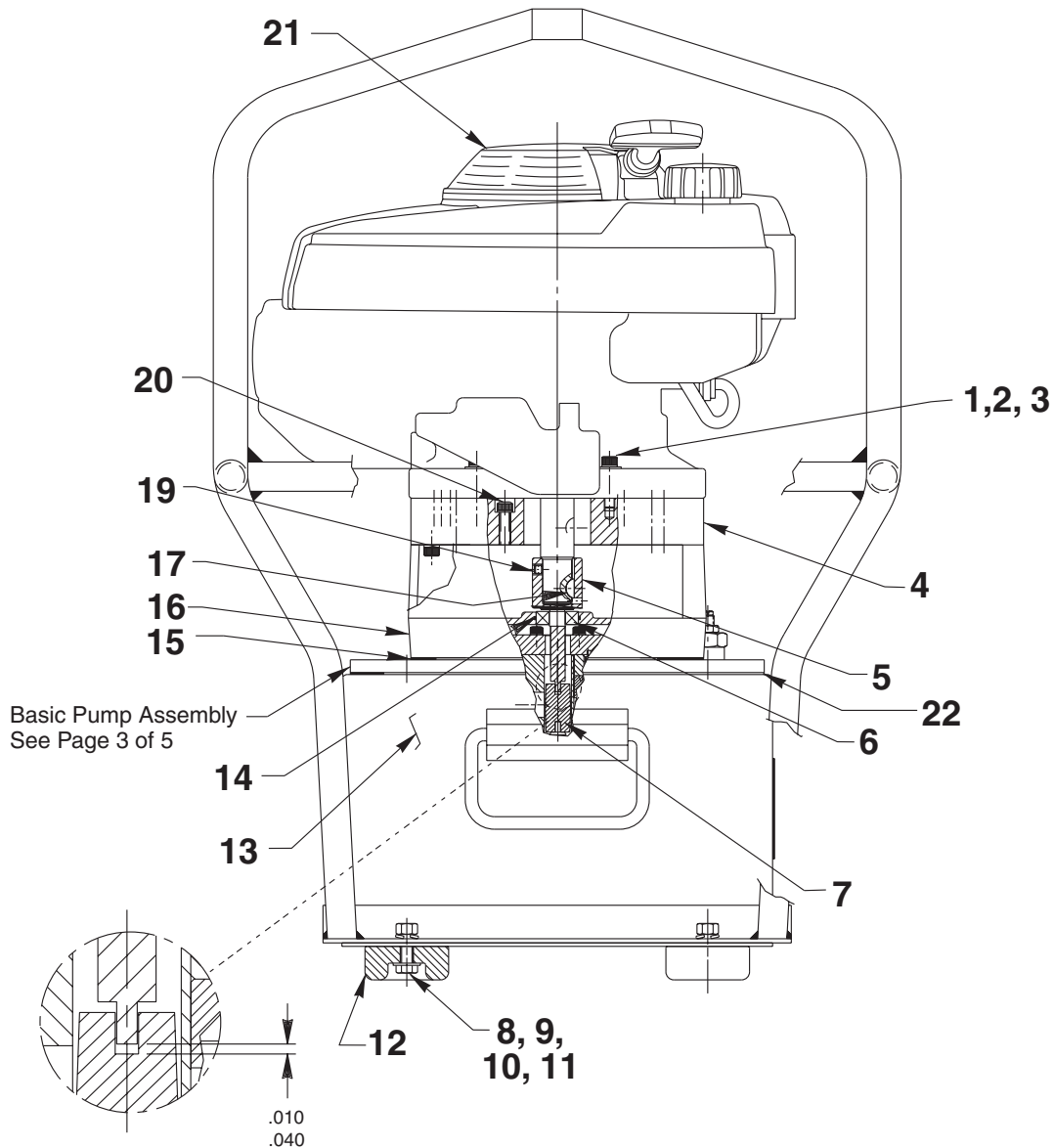


GAS HYDRAULIC PUMP

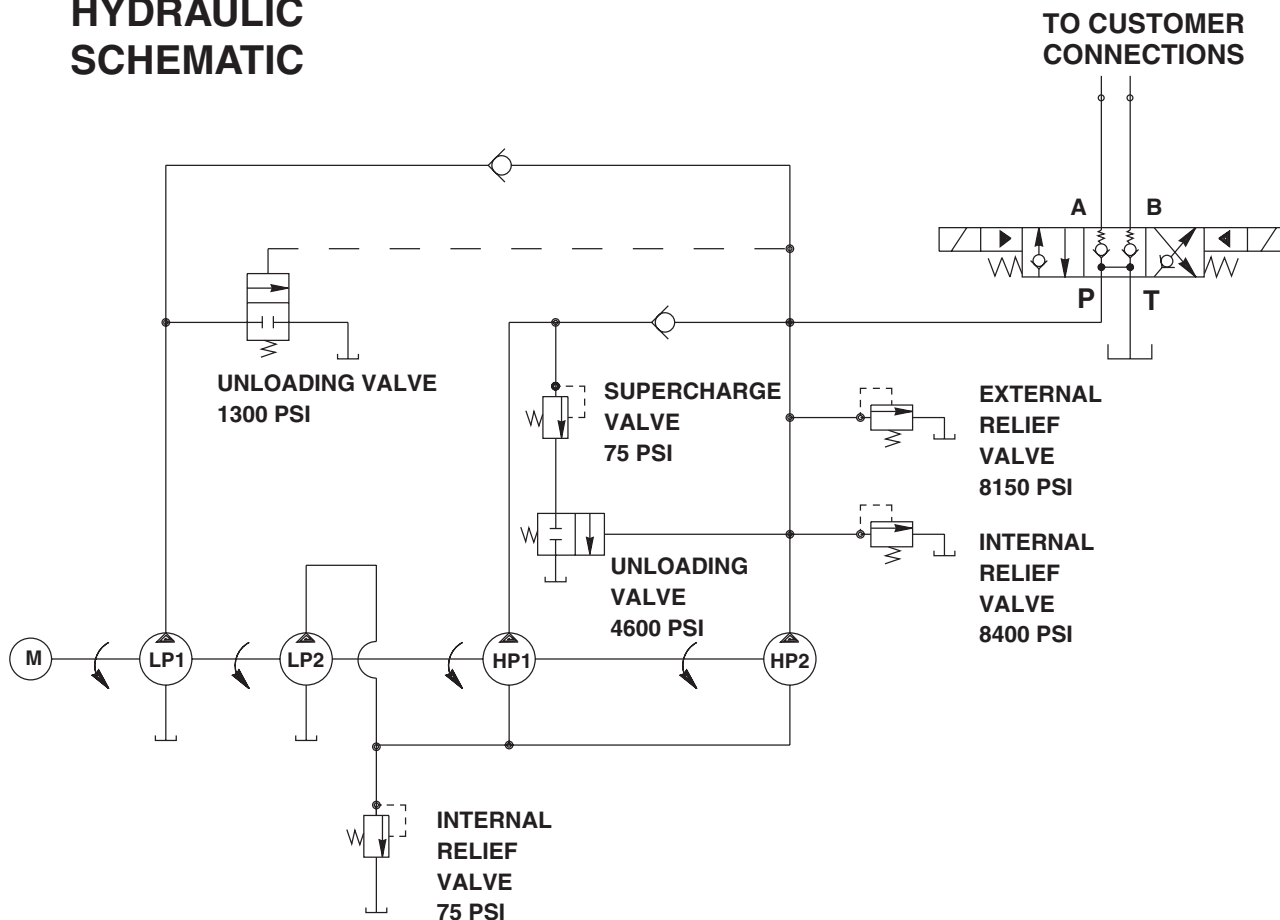
Max. Capacity: 10,000 PSI



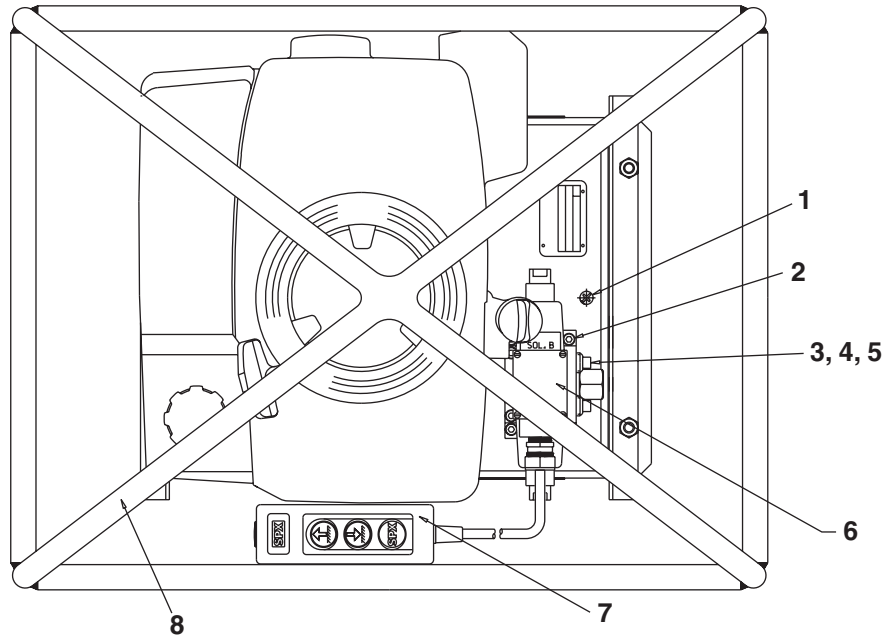
(DISTANCE BETWEEN BOTTOM OF
420052 SHAFT ADAPTER AND
BOTTOM OF SLOT IN 251206.)

Item No.	Part No.	No. Req'd	Description
1	10246	3	Washer, Lock (.59 x .32)
2	10948	3	Screw (5/16-18 UNC X 1-1/2 Lg.)
3	10257	3	Washer, Plain (.69 x .35)
4	420200	1	Mounting Plate
5	420052	1	Shaft Extension
6	10439	1	Ball Bearing
7	251206	1	Coupling
8	10052	4	Cap Screw (3/8-16 UNC X 1-1/4 Lg.)
9	10258	4	Washer (For 3/8 bolt)
10	10247	4	Lockwasher (For 3/8 bolt)
11	10204	4	Hex Nut (3/8-16 UNC)
12	250354	4	Rubber Bumper
13	40137OR9	1	Reservoir
14	15124	1	O-ring (1-3/8 X 1-1/4 X 1/16)
15	40987	1	Gasket
16	50384WH2	1	Mounting Engine Plate
17	10945	1	Woodruff Key
19	10556	1	Set Screw (1/4-20 UNC X 1/4 Lg.)
20	250427	4	Screw (5/16-18 UNC x 1/2 Lg.)
21	420416	1	Gas Engine (5.5 HP)
22	58506	1	Gasket

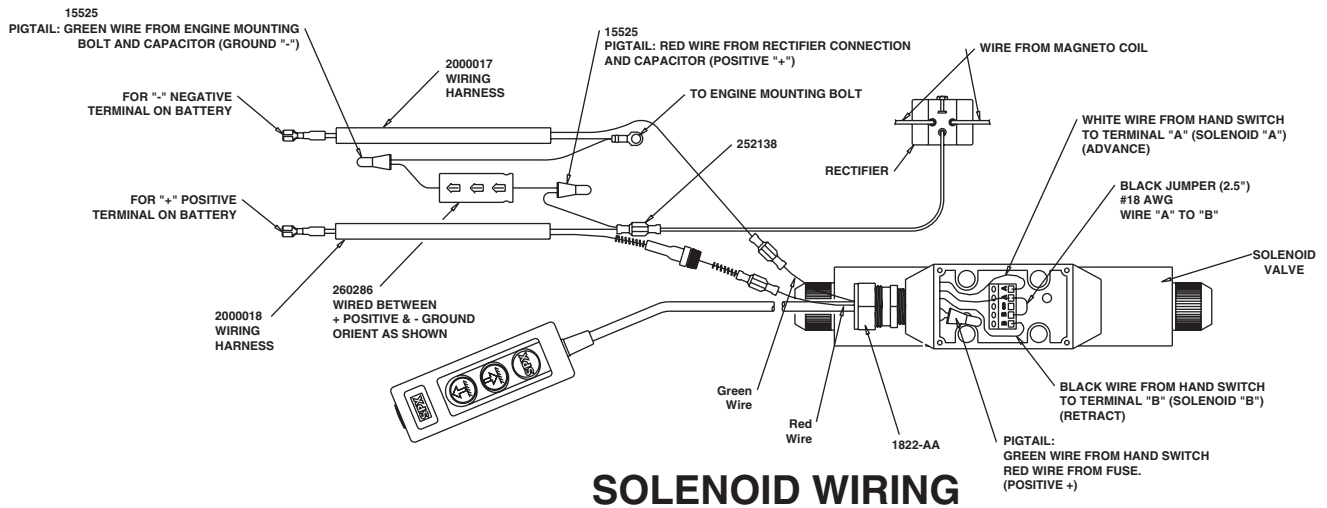
HYDRAULIC SCHEMATIC



TOP VIEW

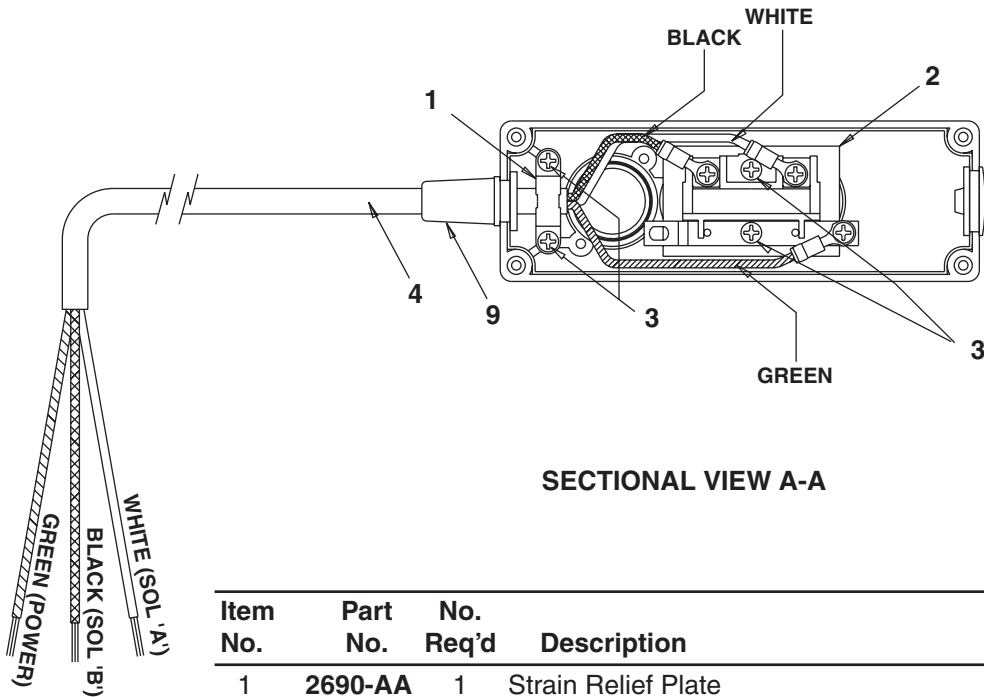
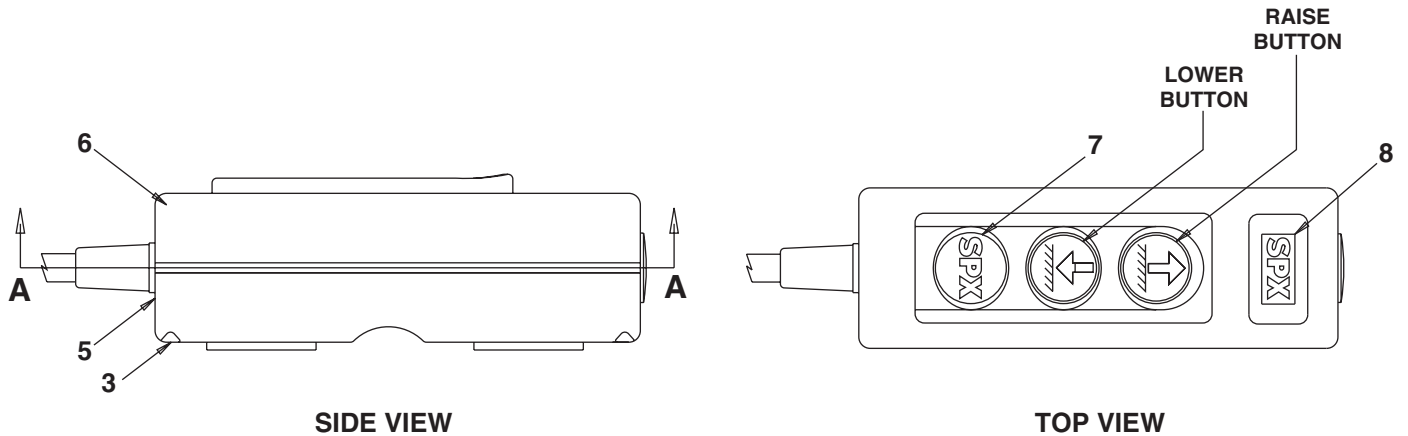


Item No.	Part No.	No. Req'd	Description
1	10177	10	Screw, Round Hd (3/8-16 x 1-1/4)
2	10856	4	Screw, Soc Hd (1/4-20 x 2-1/2)
3	200395	1	Gasket
4	65008V	1	Valve, Solenoid (4-way; Viton Seals)
5	200609	1	Tube, Drain
6	2000014	1	Valve Do3 (10 Volt 4-Way, 3 position Open Center)
7	5375-AC	1	Electric switchbox (PUGD 18 / 3 25 ft.)
8	64121BK2	1	Frame Weldment



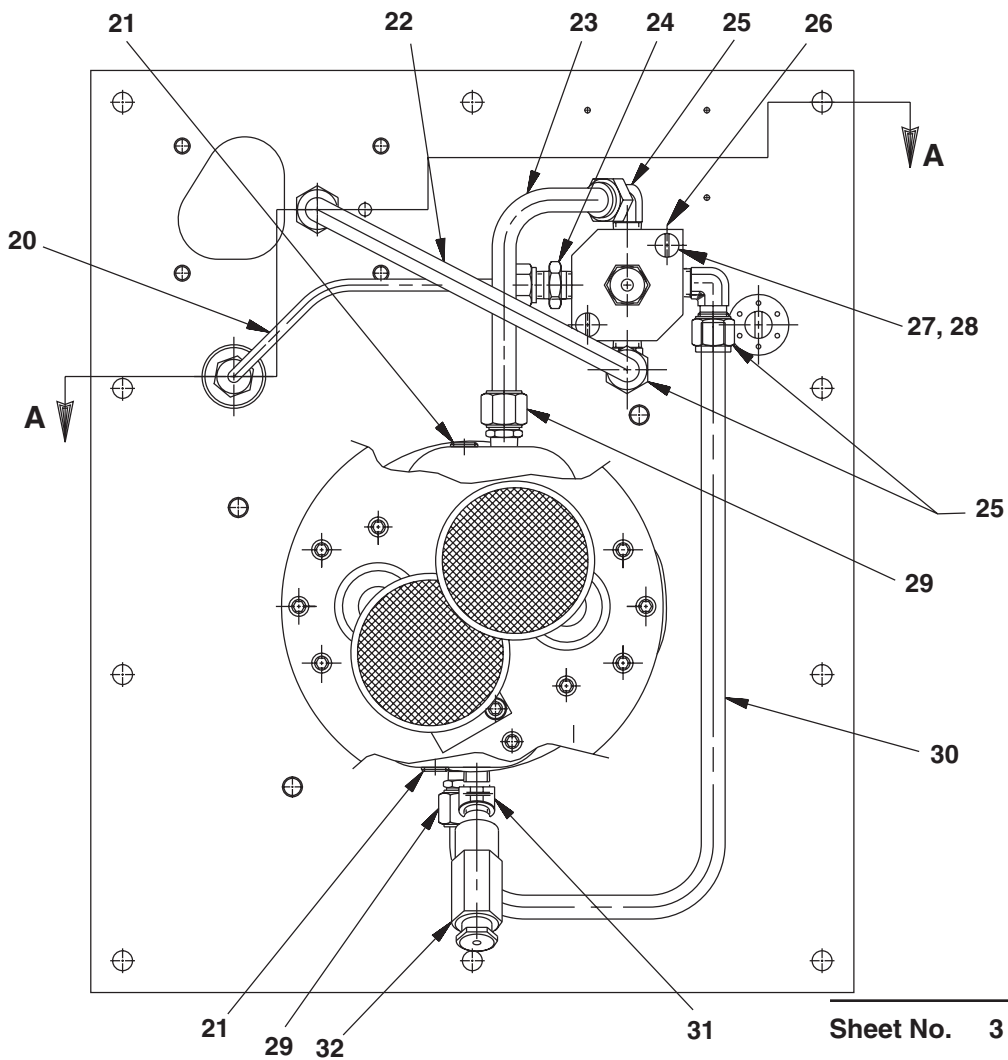
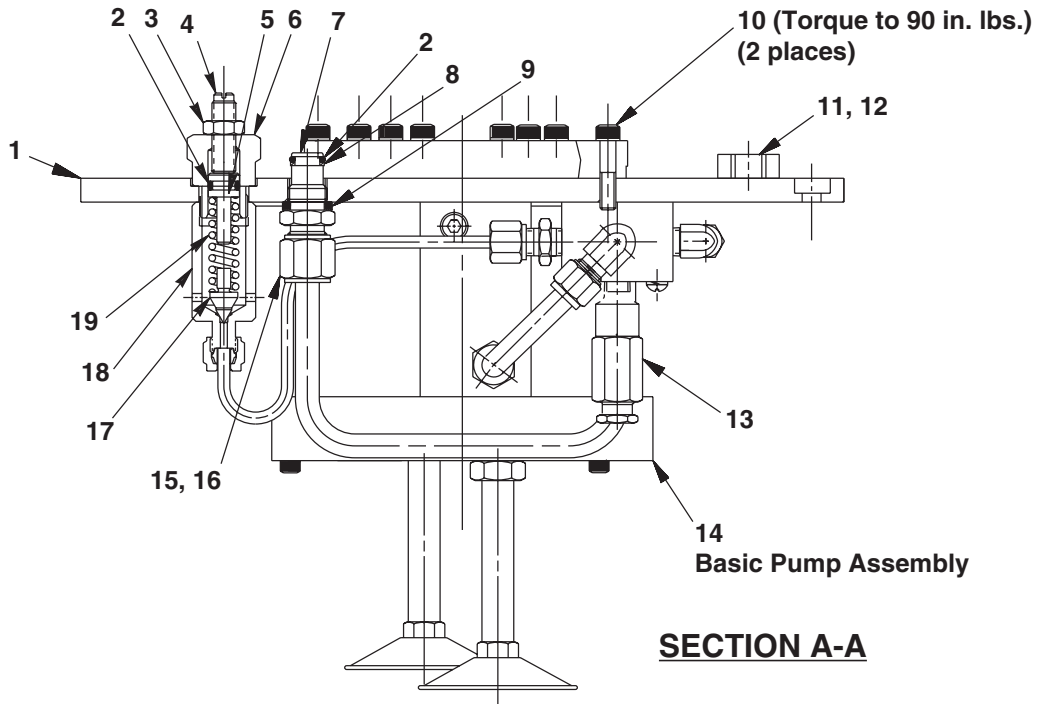
SOLENOID WIRING

#5375-AC HAND CONTROL ASSEMBLY



Item No.	Part No.	No. Req'd	Description
1	2690-AA	1	Strain Relief Plate
2	2689-AA	1	Switch Kit
3	2734-AA	8	Screw (KA35 x 16mm Phil Pan)
4	5376-AB	1	Electrical Cord (SJO 18/3 25 ft with Gasket)
5	2680-BC	1	Box Bottom
6	2679-CC	1	Box Top Cover
7	5163-AA	1	Decal (SPX round)
8	5146-AA	1	Decal (SPX square)
9	2681-BB	1	Gasket (Ref. This item is included with item 4)

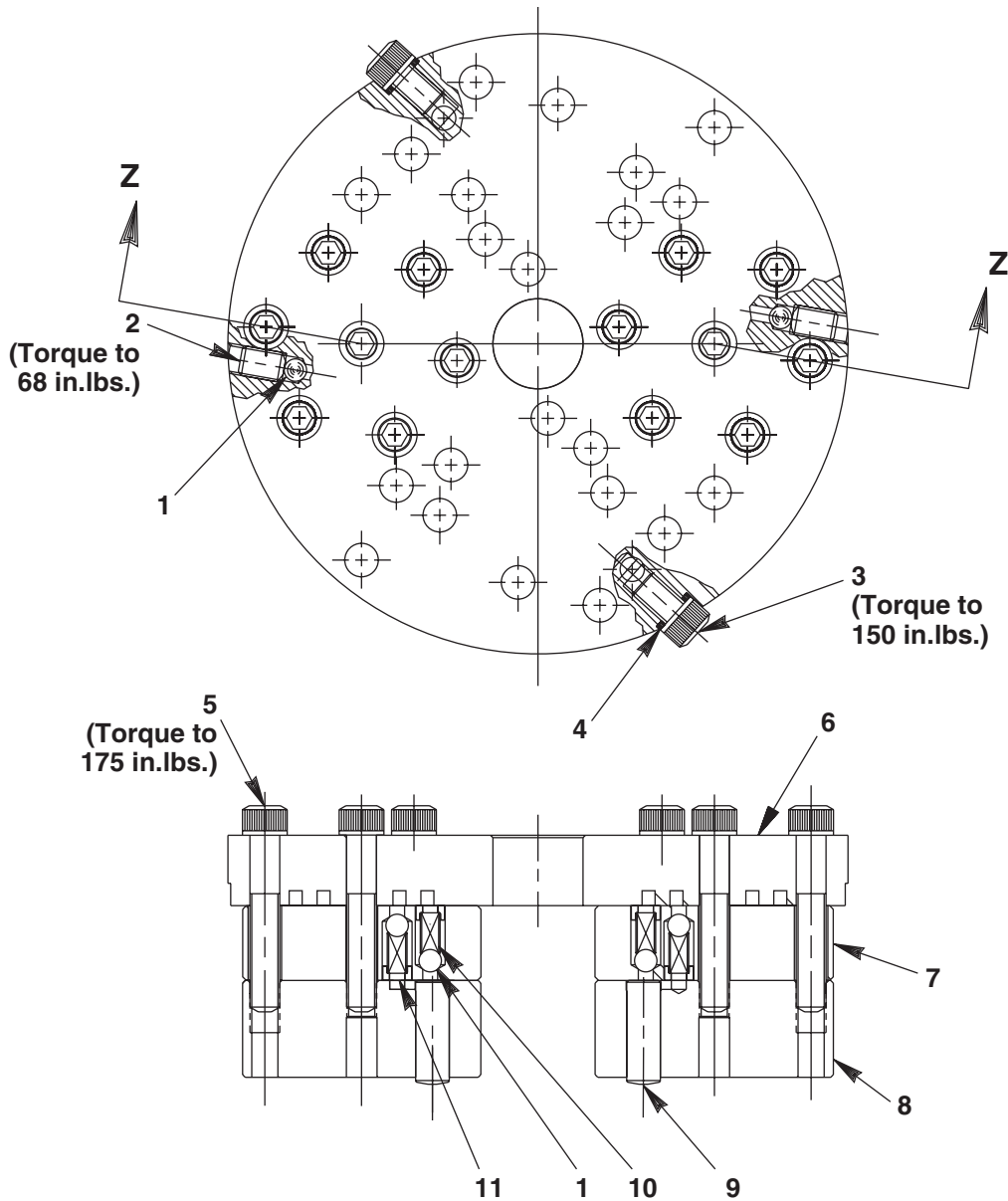
COVER PLATE ASSEMBLY - VITON SEALS



Parts List, Form No. 1000165, Back sheet 3 of 5

Item No.	Part No.	No. Req'd	Description
1	66278WH2	1	Plate, Cover
2	11439	2	O-ring (-12) Viton 75D .50 x .37
3	10386	1	Nut, Hex Jam (3/8-24)
4	22362	1	Screw, Adjust (3/8 -24 x 1-1/4)
5	21306	1	Guide, Spring
6	21305	1	Cap, Valve
7	20787	1	Connector, Valve
8	11863	1	Washer, Backup (.50 x .38)
9	21484	1	Spacer
10	10016	2	Screw, Socket Hd (1/4-20 x 1)
11	20937	1	Cap, Vent
12	18999	1	O-ring(-114) Viton .81 x .62
13	21278-80	1	Valve, Relief (8,000 psi)
14	59419	1	Pump, Basic
15	10430	1	Sleeve, Tube (3/8 Dia.)
16	10431	1	Fitting, Nut Tube (3/8 Tube)
17	21046	1	Stem, Valve
18	22361	1	Body, Valve
19	10495	1	Spring (.46 OD x 1.67 x .11 WS)
20	352077	1	Tube, Pressure Regulator
21	10427	2	Fitting, Plug (1/8 NPTF)
22	253683	1	Tube, Oil Line
23	253684	1	Tube, Oil Line
24	14844	1	Fitting, Straight (1/8 NPTF)
25	10665	3	Fitting, Elbow (90 Degree 1/4 NPTF)
26	351007	1	Manifold
27	12515	2	Screw, Round Hd (10-24 x 1-3/4)
28	10241	2	Washer Lock (.33 x .20)
29	12696	2	Fitting, Straight (1/8 NPTF)
30	352076	1	Tube, Oil Line
31	19121	1	Fitting, Elbow (45 Degree 1/8 NPTF)
32	48011-75	1	Valve, Relief (75 psi)

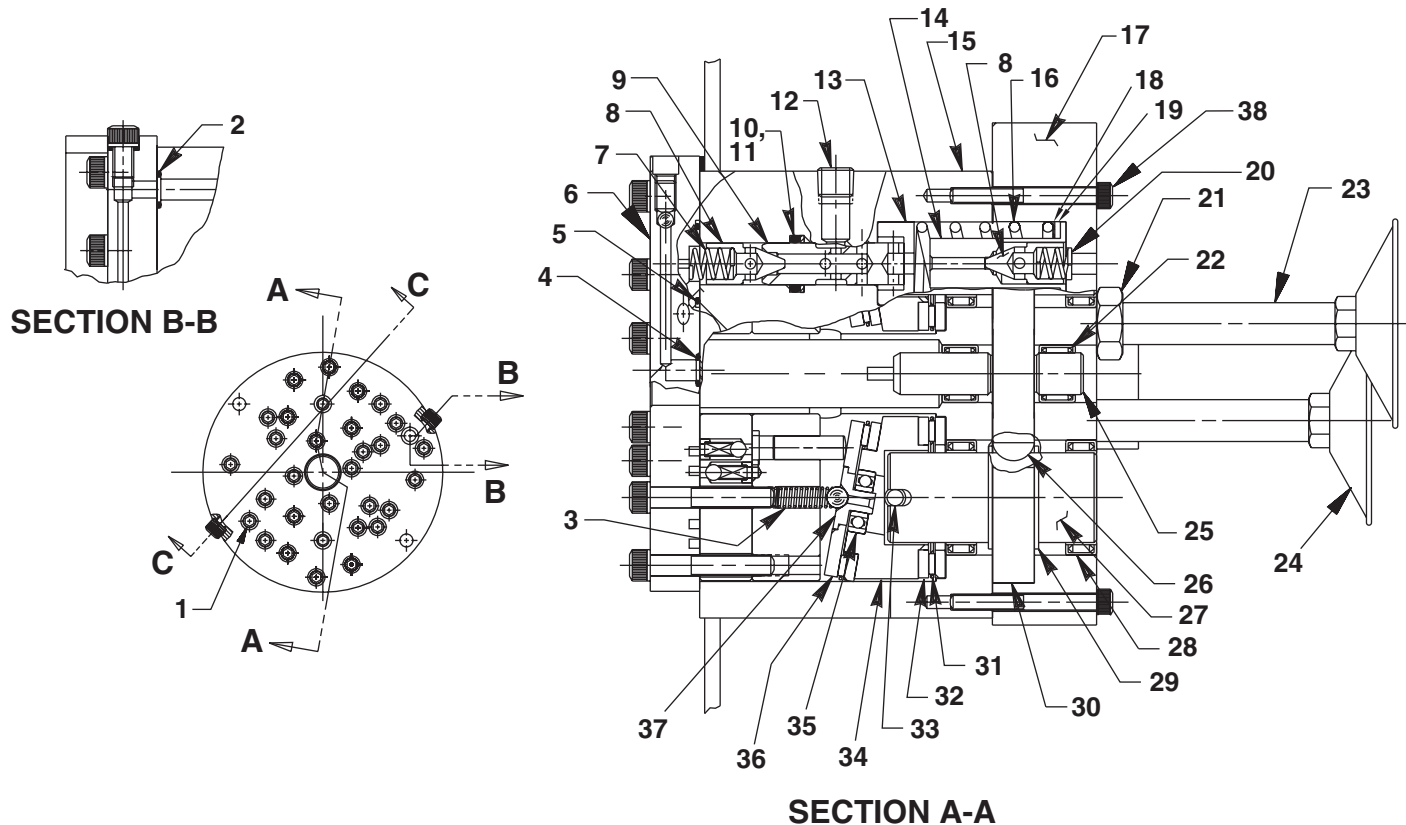
PUMP BARREL ASSEMBLY



SECTION Z-Z

Item No.	Part No.	No. Req'd	Description	Item No.	Part No.	No. Req'd	Description
1	12223	26	Ball, (3/16 Dia. Steel)	7	41048	2	Head, Valve (6 Piston)
2	10519	2	Screw, Set (1/4-20 x .375 knurled cup)	8	41063	2	Barrel, Pump
3	10002	2	Screw, Soc Hd (1/4-20 x 3/8)	9	21628	12	Piston
4	10442	2	Washer, Copper (.37 x .25)	10	10445	24	Spring (.16 OD x .72 x .01 WS)
5	10023	14	Screw, Soc Hd (1/4-28 x 1-1/2)	11	24549	24	Guide, Ball
6	66277	1	Plate, Top				

BASIC PUMP ASSEMBLY DUAL 9/32 DIAMETER PISTONS VITON SEALS



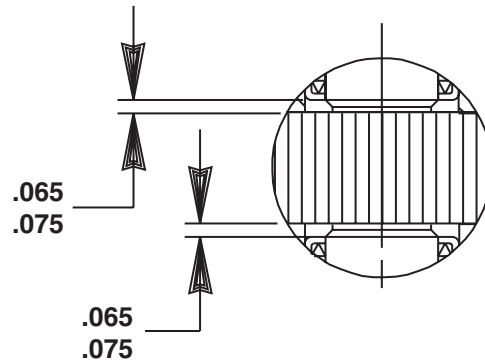
Item No.	Part No.	No. Req'd	Description
1	10020	20	Screw, Soc Hd (1/4-20 x 1-1/4)
2	18974	1	O-Ring (-011) Viton .43 x .31
3	10361	2	Spring (.25 OD x 1.00 x .03 WS)
4	11438	2	O-Ring (-010) Viton .37 x .25
5	11443	2	O-Ring (-018) Viton .87 x .75
6	DR352078		Pump Barrel Assembly (See sht 4 of 5)
7	10425	1	Spring (.37 OD x .75 x .03 WS)
8	20771	2	Poppet
9	20849	1	Spool
10	11445	1	O-Ring (-112) Viton .68 x .50
11	12389	1	Washer, Backup (.69 x .50)
12	10427	2	Fitting, Plug (1/8 NPTF)
13	23255	1	Guide, Spring
14	253299	1	Spacer
15	64560	1	Body, Double Pump
16	250633	1	Spring (1.0 OD x 1.99 x .21 WS)
17	66295	1	Plate, Pump End
18	200423	1	Shim
19	200645	1	Shim

Item No.	Part No.	No. Req'd	Description
20	250228	1	Spring (.36 OD x 1.00 x .03 WS)
21	10390	1	Nut, Hex Jam (1/2-30)
22	11199	2	Bearing, Needle
23	250851	2	Tube, Intake
24	29682	2	Filter, (Flat 100 x 90 Mesh)
25	21272	1	Gear, Drive
26	11821	2	Key, Woodruff
27	23556	2	Shaft
28	11064	4	Bearing, Needle
29	11261	4	Ring, Retain Ext (1.05 x .050)
30	23557	2	Gear, Drive
31	11228	4	Bearing, Needle
32	11227	6	Race, Bearing
33	11955	2	Pin, Spring Slotted (.25 x 1.75)
34	351004	1	Plate, Angle
35	11814	2	Bearing, Ball
36	23548	2	Plate, Top
37	23547	2	Plate, Bearing Top
38	10001	16	Screw

BASIC PUMP ASSEMBLY - CONTINUED
DUAL 9/32 DIAMETER PISTONS
NYLON SEALS

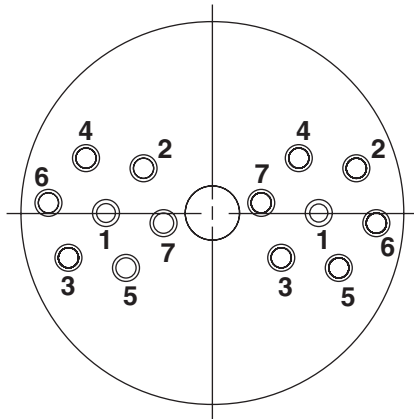
SECRET

NEEDLE BEARING INSTALLATION SPECIFICATIONS



When replacing the needle bearings on the drive gear of the basic pump, the dimensions shown must be as specified.

BOLT TIGHTENING SEQUENCE



NOTE: Assemble in sequence shown. Lubricate under head and on threads. Torque to 180 in. lbs.